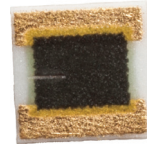


Features

- Thick film technology
- Single-Sided Terminations for Wirebonding, Soldering, and Epoxy Attachment
- Gold, Platinum Silver, and Platinum Silver with Solder Coating Terminations
- Resistance Values from 0.1Ω to 1 TΩ
- Low TCRs
- Operating Temperature: -55°C to 150°C

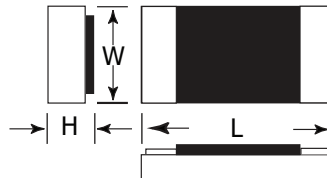


Thick Film

| Part Number | Length | Width | Height | Rated Power @ 70°C | WVDC | Tolerances (%)* |
|-------------|--------------|--------------|------------|--------------------|------|-----------------|
| IMS000 | 0.045 ± .005 | 0.030 ± .005 | 0.016 max. | 125 mW | 60 | 1, 2, 5, 10 |
| IMS001 | 0.050 ± .005 | 0.050 ± .005 | 0.016 max. | 125 mW | 60 | 1, 2, 5, 10 |
| IMS002 | 0.075 ± .005 | 0.050 ± .005 | 0.016 max. | 175 mW | 100 | 1, 2, 5, 10 |
| IMS003 | 0.100 ± .005 | 0.050 ± .005 | 0.016 max. | 250 mW | 160 | 1, 2, 5, 10 |
| IMS004 | 0.150 ± .005 | 0.050 ± .005 | 0.016 max. | 350 mW | 350 | 1, 2, 5, 10 |
| IMS005 | 0.100 ± .005 | 0.100 ± .005 | 0.016 max. | 500 mW | 160 | 1, 2, 5, 10 |
| IMS008 | 0.100 ± .005 | 0.025 ± .005 | 0.016 max. | 100 mW | 175 | 1, 2, 5, 10 |
| IMS009 | 0.080 ± .005 | 0.050 ± .005 | 0.016 max. | 175 mW | 150 | 1, 2, 5, 10 |
| IMSH09 | 0.080 ± .005 | 0.050 ± .005 | 0.016 max. | 175 mW | 150 | 10, 20, 30 |
| IMS010 | 0.125 ± .005 | 0.050 ± .005 | 0.016 max. | 250 mW | 230 | 1, 2, 5, 10 |
| IMS014 | 0.035 ± .005 | 0.035 ± .005 | 0.016 max. | 125 mW | 50 | 1, 2, 5, 10 |
| IMS017 | 0.025 ± .005 | 0.030 ± .005 | 0.016 max. | 30 mW | 40 | 1, 2, 5, 10 |

*1%, 2% not available over 1Mohm.

Dimensional Outline



Ordering Information

Example: 0.045" X 0.030", gold terminations, 100Ω, 5% tolerance

| | | | | |
|------------------|------------------|--------------------|-------------|----------|
| | IMS000 | - 1 - | 1000 | J |
| 000 ¹ | 001 | 002 | | |
| 003 | 004 | 005 | | |
| 008 | H09 | 009 | | |
| 010 | 014 ² | 017 ^{2,3} | | |

Termination

- 1 Au
- 3 Pt/Ag
- C Pt/Ag w/ 62/36/2 solder
- P Pt/Ag w/ 96/4 solder

Add "B" after the dash number to indicated a backplane of the same Metalization (-1,-3 only).

Tolerance

F - 1% G - 2% J - 5%

K - 10% L - 15% M - 20%

N - 30%

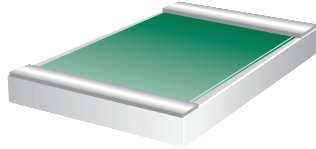
Resistance Value

The first three digits are significant values. The fourth is the number of zeroes following. The R indicates a decimal point when resistance value is less than 100Ω.

Indicates RoHS compliance

Bulk packaging is standard. Tape and reel and waffle packs are available for some sizes. Please consult the factory.

Terminations



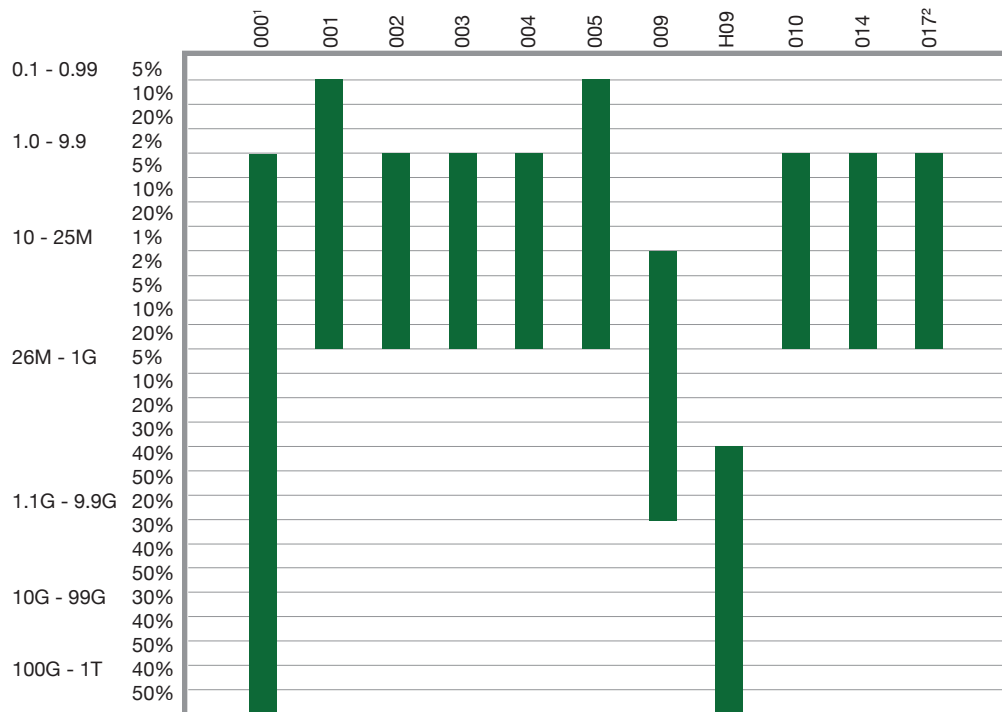
Single side termination

- ✓ -1 Au
- ✓ -3 PtAg
 - C PtAg with 62/36/2 solder coating
- ✓ -P PtAg with 96/4 solder coating

Note: Not all termination materials available in all styles.

Resistance Ranges

The table below illustrates the resistance values and the tolerances available for all of IMS' single side devices. Resistance values can be **as low as 0.1Ω** and **as high as 1000 GΩ** (device dependent). For resistances higher than 1000 GΩ, consult the factory.



Jumpers are available in all sizes.
 1 Larger bond pads available for auto wirebonding.
 2 Highest Value for 1% or 2% Tolerance is 1Mohm