

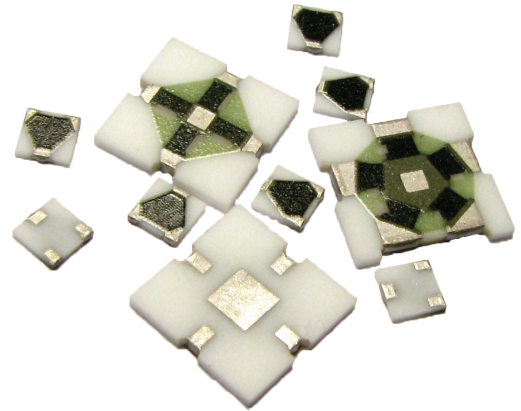
# IPS Series Two Way

ims

## 6dB Thick Film Resistive Power Splitter

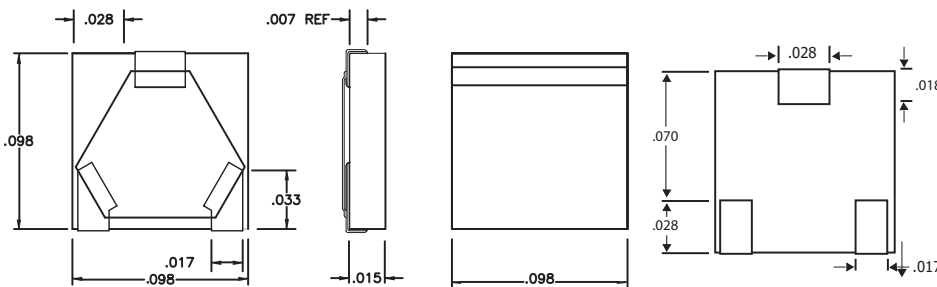
The IPS 6dB power splitters were created specifically for applications requiring a low loss split over a broad frequency range. Device construction is surface mountable microstrip on alumina.

Thick Film



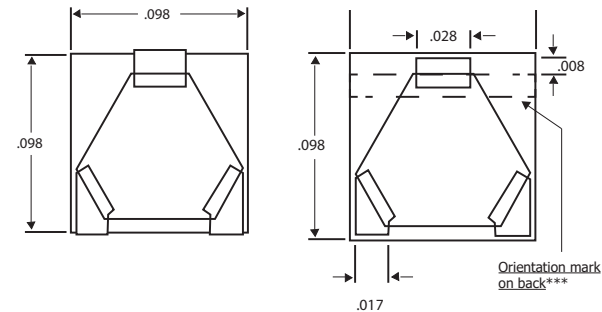
	PtAg	PtAg w Sn62	PtAg w Sn96	ULR PtAg	ULR PtAg w Sn62	ULR PtAg w Sn96	Au
WA	2346	2528	2640	2656		2649	
PW					2669		
SS	2541 <sup>1</sup>	2645					
SB	2290						2331

### IPS 2669\*\*\*



IPS2346  
IPS2528  
IPS2640

IPS2290  
IPS2331  
IPS2541  
IPS2668\*\*\*



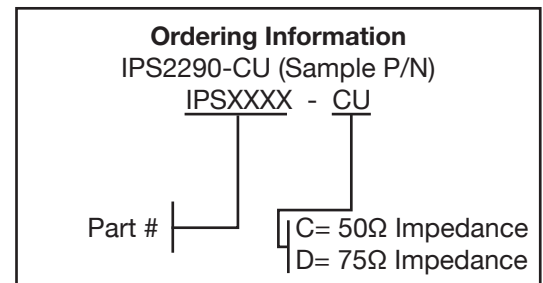
Item	Specification
Attenuation (by design):	6dB each output
Attenuation Accuracy (by design):	±0.5dB
Operating Frequency:	DC to 20GHz*
Input Power Rating**:	1W
Load Power Rating**:	0.5W
Operating Temperature:	-55°C to 150°C
VSWR (Max)*:	1.3:1
Impedance:	50Ω or 75Ω in / out standard
Architecture:	Thick Film on 96% Alumina
Dimensions:	0.098" x 0.098" x 0.020" Max

\*Device will operate to 20GHz and above when mounted in an appropriately designed circuit exhibiting VSWR and amplitude balance, whose magnitude depends on the quality and integrity of the match and other circuit dependent parameters.

\*\*Baseplate temperature 100°C or less

\*\*\*Orientation mark on back of IPS2668 and IPS2669 ONLY.

1. IPS2668 = IPS2541 plus orientation stripe on backside.



**International Manufacturing Services, Inc.**

50 Schoolhouse Ln., Portsmouth RI 02871 USA

Tel (401) 683-9700 • Fax (401) 683-5571 • e-mail: [ims@ims-resistors.com](mailto:ims@ims-resistors.com) • [www.ims-resistors.com](http://www.ims-resistors.com)

IPS ver. A 4/2016 • Specifications Subject to Change Without Notice • ISO9001:2008