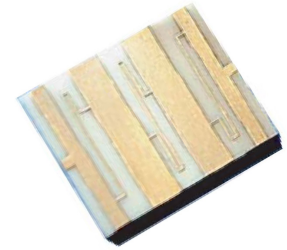


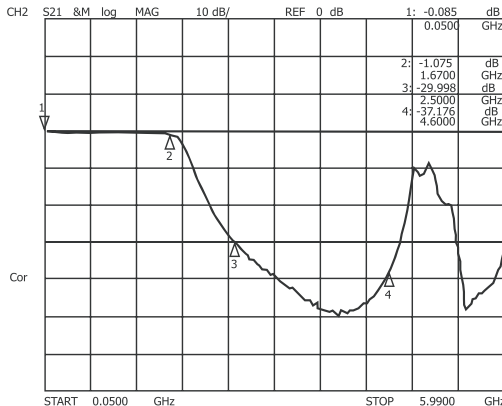
Thick Film L-Band Low Pass Filter

The **ims** IMF Series low pass filters (LPF) afford the customer the performance of a custom designed filter with the price and delivery closer to that of an off-the-shelf solution. Circuit construction is lumped/distributed element SMT microstrip on alumina, which enables higher performance than an equivalent off-the-shelf packaged device. Tooling costs are held to a minimum.



IMF2262	Specification
Passband:	up to 1.6 GHz
Rejection:	25 dB min. maintained to 3rd harmonic
VSWR:	1.1:1
Insertion Loss:	0.5 dB typical
Impedance:	50 ohm
Dimensions:	.55" x .400" x .025"
Power:	20-40W depending on baseplate temp.
Substrate:	Alumina

Frequency Response

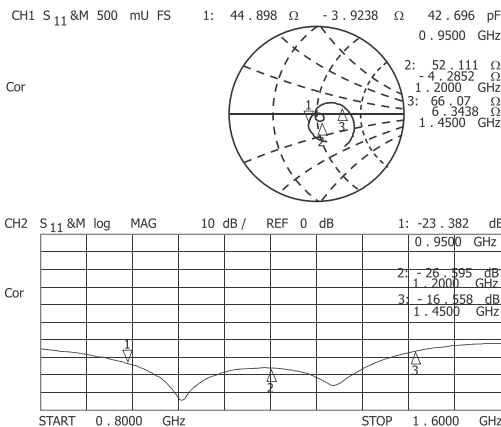


Included to the left is an example of a LPF that was designed for a specific customer application. This filter was matched to the client circuit for minimum insertion loss and optimum VSWR and rejection.

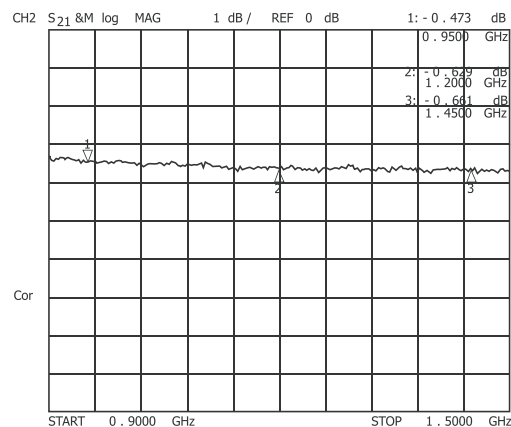
The curve illustrates the performance of the IMF2262 filter. Characteristics were determined by the filter requirements submitted by the customer.

The actual curve for other semicustom LPFs will vary and will be determined by customer requirements and will be furnished with the first article delivery.

VSWR



Insertion Loss



International Manufacturing Services, Inc.

50 Schoolhouse Ln., Portsmouth RI 02871 USA

Tel (401) 683-9700 • Fax (401) 683-5571 • e-mail: ims@ims-resistors.com • www.ims-resistors.com