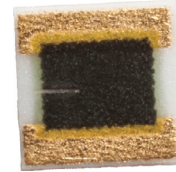


## Features

- Thick film technology
- Single-Sided Terminations for Wirebonding, Soldering, and Epoxy Attachment
- Gold, Platinum Silver, and Platinum Silver with Solder Coating Terminations
- Resistance Values from 0.1Ω to 1000 GΩ
- Low TCRs
- Operating Temperature: -55°C to 155°C



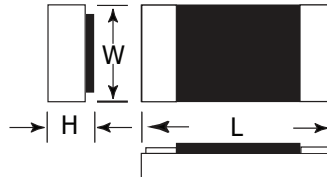
Thick Film

Part Number	Length	Width	Height	Rated Power @ 70°C	WVDC	Tolerances (%)**
IMS000	0.045 ± .005	0.030 ± .005	0.016 max.	125 mW	60	1, 2, 5, 10
IMS001	0.050 ± .005	0.050 ± .005	0.016 max.	125 mW	60	1, 2, 5, 10
IMS002	0.075 ± .005	0.050 ± .005	0.016 max.	175 mW	100	1, 2, 5, 10
IMS003	0.100 ± .005	0.050 ± .005	0.016 max.	250 mW	160	1, 2, 5, 10
IMS004	0.150 ± .005	0.050 ± .005	0.016 max.	350 mW	350	1, 2, 5, 10
IMS005	0.100 ± .005	0.100 ± .005	0.016 max.	500 mW	160	1, 2, 5, 10
IMS008	0.100 ± .005	0.025 ± .005	0.016 max.	100 mW	175	1, 2, 5, 10
IMS009	0.080 ± .005	0.050 ± .005	0.016 max.	175 mW	150	1, 2, 5, 10
IMSH09	0.080 ± .005	0.050 ± .005	0.016 max.	175 mW	150	10, 20, 30
IMS010	0.125 ± .005	0.050 ± .005	0.016 max.	250 mW	230	1, 2, 5, 10
IMS014	0.035 ± .005	0.035 ± .005	0.016 max.	125 mW	50	1, 2, 5, 10
IMS017	0.025 ± .005	0.030 ± .005	0.016 max.	30 mW	40	1, 2, 5, 10

\*Increased power handling can be achieved by using proper circuit design and power management techniques.

\*\*1%, 2% not available over 1Mohm.

## Dimensional Outline



### Ordering Information

Example: 0.045" X 0.030", gold terminations, 100Ω, 5% tolerance

<p>000<sup>1</sup> 001 002                  003 004 005                  008 H09 009                  010 014<sup>2</sup> 017<sup>3</sup></p> <p><sup>1</sup>Available in -0, -1, -2 only  <sup>2</sup>Available in -1 only  <sup>3</sup>1%, 2% not available over 1Mohm</p>	<p><b>IMS000</b>    - 1 -    <b>1000</b>    <b>J</b></p>	<p><b>Tolerance</b>                  F - 1%    G - 2%    J - 5%                  K - 10%    L - 15%    M - 20%                  N - 30%</p>
--	--	---

---

<p><b>Termination</b></p> <ul style="list-style-type: none"> <li>-0 Pd/Ag (IMS000 only)</li> <li>-2 Pd/Ag w/ 62/36/2 solder (IMS000 only)</li> <li>-1 Au</li> <li>-3 Pt/Ag</li> <li>-C Pt/Ag w/ 62/36/2 solder</li> <li>-P Pt/Ag w/ 62/36/2 solder</li> </ul> <p>Add "B" after the dash number to indicated a backplane of the same Metalization (-1,-3 only).</p>	<p><b>Resistance Value</b></p> <p>The first three digits are significant values. The fourth is the number of zeroes following. The R indicates a decimal point when resistance value is less than 100Ω.</p>
--	---

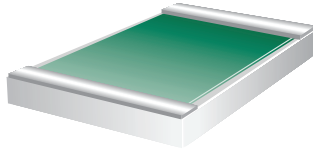
Bulk packaging is standard. Tape and reel and waffle packs are available for some sizes. Please consult the factory.

## International Manufacturing Services, Inc.

50 Schoolhouse Ln., Portsmouth RI 02871 USA

Tel (401) 683-9700 • Fax (401) 683-5571 • e-mail: [ims@ims-resistors.com](mailto:ims@ims-resistors.com) • [www.ims-resistors.com](http://www.ims-resistors.com)

## Terminations



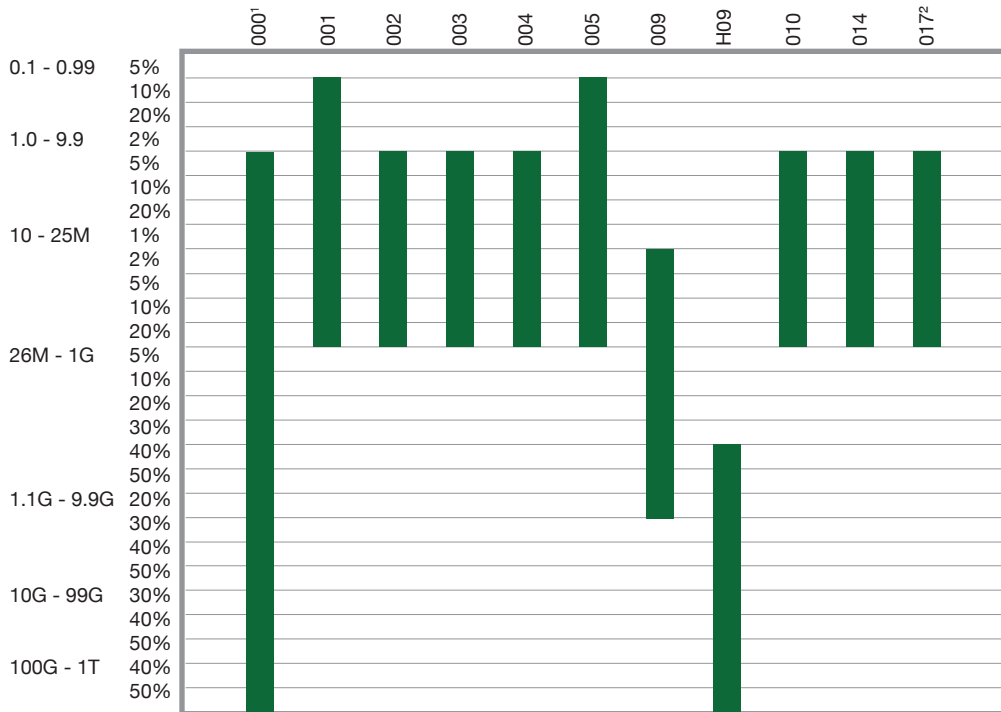
Single side termination

- 1 Au
- 3 PtAg
- C PtAg with 62/36/2 solder coating
- P PtAg with 96/4 solder coating

**Note: Not all termination materials available in all styles.**

## Resistance Ranges

The table below illustrates the resistance values and the tolerances available for all of IMS' single side devices. Resistance values can be **as low as 0.1Ω** and **as high as 1000 GΩ** (device dependent). For resistances higher than 1000 GΩ, consult the factory.



Jumpers are available in all sizes.

1 Larger bond pads available for auto wirebonding.

2 Highest Value for 1% or 2% Tolerance is 1Mohm