



SZG: Where High Power and High Frequency Join Forces

P. Leary

The number of high frequency, high power applications is rapidly increasing each year. The need for resistors with both high frequency performance and high power handling capability is growing. In most cases, the smaller the resistor, the better it will perform at high frequencies. At the same time, the larger the resistor, the better the thermal properties are. Many designers are making compromises when both power and performance matter. IMS has solved this dilemma with an innovative resistor termination that offers the best of both worlds called a SZG style termination device.

Power

Thermal management is becoming much more important as the density of electronic components and the applied power increases. Both factors lead to higher temperatures produced by not only the individual components, but also the entire assembly. Heat dissipation in high power electronics creates challenges for integrating material selection together with thermal designs. As a result of the power and signal combinations running through resistors, heat is generated. When more power is applied to a resistor, more heat is generated. If this heat is not properly transferred out of the part, the heat build-up can cause the part to shift in value and eventually fail electrically and mechanically.

When a company claims extremely high power levels in advertisements and data sheets, that designer must maintain certain criteria. Maximum surface or baseplate temperatures (often these are typically listed in the “fine print”) is a common example. The IMS termination NDR-2010 SZG has a power rating of 150Watts with a baseplate temperature of 50°C. The devices themselves are capable of running at these power ratings due to the higher thermal conductivity of the substrate and the ability to quickly and efficiently transfer the heat away from the device. The challenge is where that heat gets transferred. The following are techniques to manage this thermal energy generated by high-power surface-mount resistors.

One technique is to employ a thermal back-plane. This technique uses a larger copper plate on the backside

of the board to transfer the heat away from the circuit. The heat is spread over a large thermal mass, which will increase the area to transfer heat by convection, conduction and/or radiation. Note that if active thermal management is not employed, the board and surrounding environment may succumb to the heat and exceed safe operating temperatures.

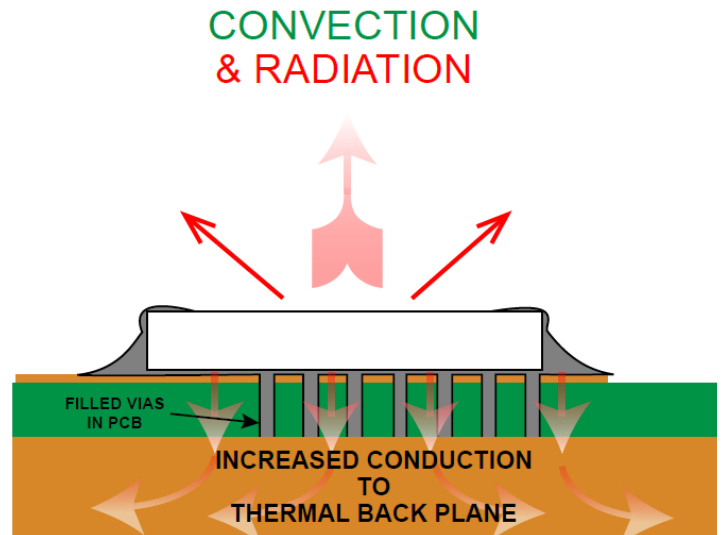


Figure 1 – Example of Implemented backplane for conductive cooling of a resistor

To take the power handling one step further, IMS has implemented a “scrub-cut” rather than the traditional L-cut when the resistor is being laser trimmed to the required tolerance. The scrub-cut runs parallel with the tapered resistor meaning there is no current crowding or hot spots along the resistive element. Figure 2 shows images of the current densities on the same component. The left image has a L trim while the image on the right has a scrub/scan trim. You can see by the color that there is much more current density in the L cut resulting in a hot spot while there is almost no current crowding in the scrub cut image

International Manufacturing Services, Inc.

50 Schoolhouse Lane
Portsmouth, RI 02871-2435
www.ims-resistors.com

OFFICE 401-683-9700
FAX 401-683-5571
EMAIL marketing@ims-resistors.com

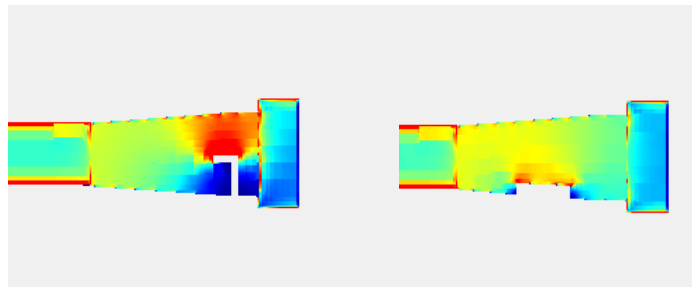


Figure 2 – Standar “L” cut trim (Left) vs. “Scan” or “Scrub” cut trim (Right)

Frequency Performance

The SZG resistor uses a tapered resistor body with a smaller input pad. Making the input side narrower improves VSWR at higher frequencies. The resistor then expands to a larger cross section to optimize heat dissipation and maintain VSWR matching. Of course, the actual impedance match is a combination of the customer input line width and the customer’s substrate materials, and how they interact with the component. The wider trace also lowers the high frequency impedance linearly due to the taper. The increasing capacitance of the wider trace lowers the impedance as you move towards the back end of the part which is connected to ground and therefore zero ohms. So the taper takes the 50Ω input, and starts transitioning the impedance towards the output end of zero ohms.

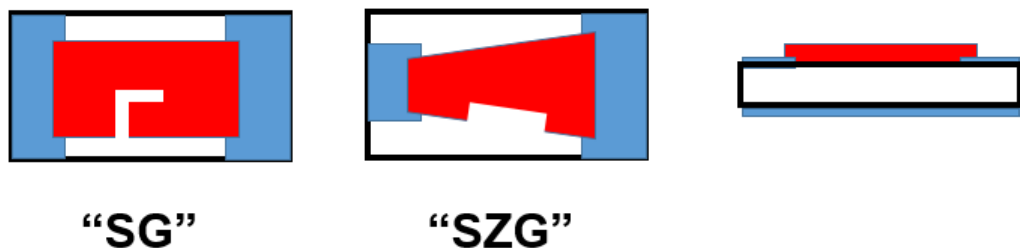


Figure 3 – SG and SZG termination resistor and trim comparison

Compared to the standard SG the SZG has a drafted resistor body to minimize input termination width differences from the trace. The SZG uses a “Scan-Cut” or edge-trim for tuning to a 2% tolerance. The scan-cut improves performance for high power or pulsed power and it reduces stress concentrations or heat concentrations do to current crowding.

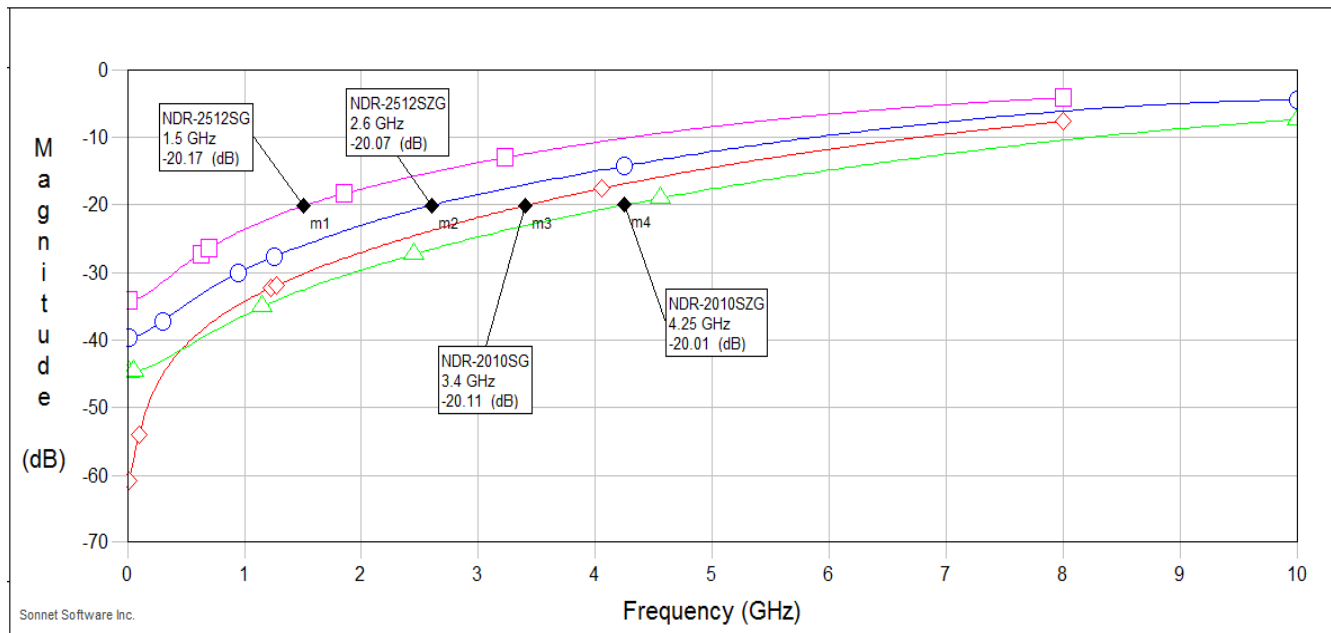


Figure 4 - Frequency response up to 8GHz for NDR-2512SG, NDR-2512SZG, NDR-2010SG, NDR-2010SZG

The graph above shows the frequency response (return loss) between the SG and the SZG in 2 different package sizes. The NDR-2010SG has a RL of -20dB at 3.4GHz while the NDR-2010SZG has a RL of -20dB at 4.3GHz, yet both have a power rating of 150 Watts. All of the Aluminum Nitride (N-series) are compatible with IMS's Ultra Leach Resistant Termination (ULR) metallization. (For more information on the ULR termination metallization please see white paper Advantages of Multi-metal Terminations for NonMagnetic, High Temperature Solder Applications on the ims-resistors.com website.)

The IMS team has also developed a reverse aspect ratio NDR-1225SZG that has an RL of -20dB at 6.65GHz and has a power rating of 200W when a constant base plate temperature of 50°C is maintained. Plots of return loss are below in Figure 5.

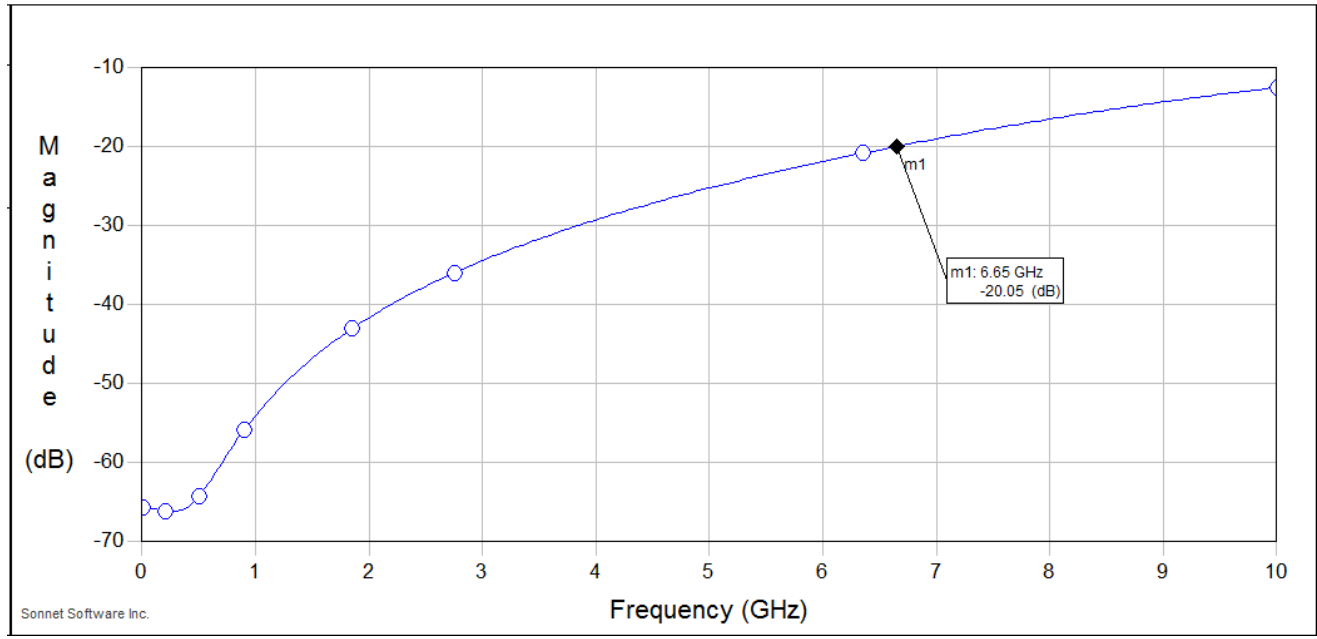


Figure 5 – Return loss of reverse aspect ratio NDR-1225SZG

The SZG style resistor gives us a better frequency response than components with the same footprint with thermal properties equivalent to the same size package. Custom designs are available but standard packages are readily available for 1206-3725 with the SZG termination. When looking for a high power, high frequency resistor without compromises, N-series SZG is recommended and successfully deployed in today's hi-tech applications. Please contact the experts at IMS to discuss your application in greater detail.

International Manufacturing Services, Inc.

50 Schoolhouse Lane
Portsmouth, RI 02871-2435
www.ims-resistors.com

OFFICE 401-683-9700
FAX 401-683-5571
EMAIL marketing@ims-resistors.com