

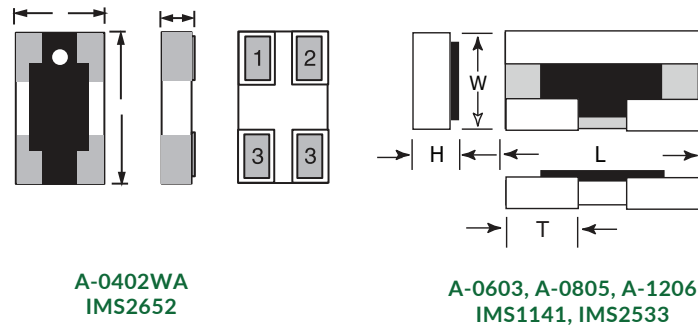


FEATURES

- 99.5% Al₂O₃ substrate material
- Ultra low noise attenuator element
- Excellent high frequency performance
- Low inductance and parasitic capacitance
- Nickel barrier layer for excellent solderability and mechanical integrity
- Stable characteristics over temperature and time
- Polyimide passivation of attenuator element
- 100% matte tin finish

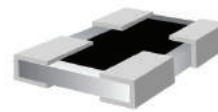
DIMENSIONS

Part	Length	Width	Height (max)	Terminal	Rated Power (70°C)	Impedance
A-0402WA & IMS2652	0.039" ± .004"	0.020" ± .004"	0.014"	0.009" ± .002"	32mW	50Ω
A-0603 & IMS2533	0.063" ± .004"	0.032" ± .004"	0.020"	0.016" ± .002"	63mW	50Ω
A-0805 & IMS1141	0.079" ± .008"	0.049" ± .008"	0.020"	0.020" ± .008"	100mW	50Ω
A-1206	0.126" ± .008"	0.063" ± .008"	0.020"	0.039" ± .010"	125mW	50Ω

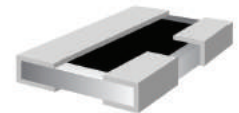


TERMINATIONS

WA -Full Wraparound



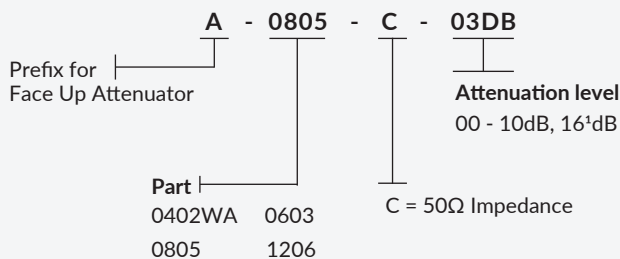
**A-0402WA
IMS2652**



**A-0603, A-0805, A-1206
IMS1141, IMS2533**

ORDERING INFORMATION

Face Up Example: 3dB, 100mW, SMT 0805 attenuator

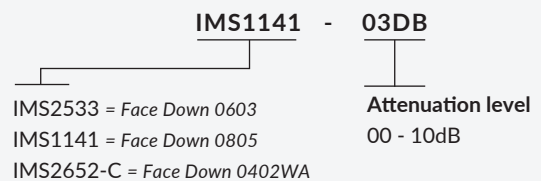


1. A-1206 only

Packaging: T=Tape and Reel, B=Bulk

RoHS Compliant =

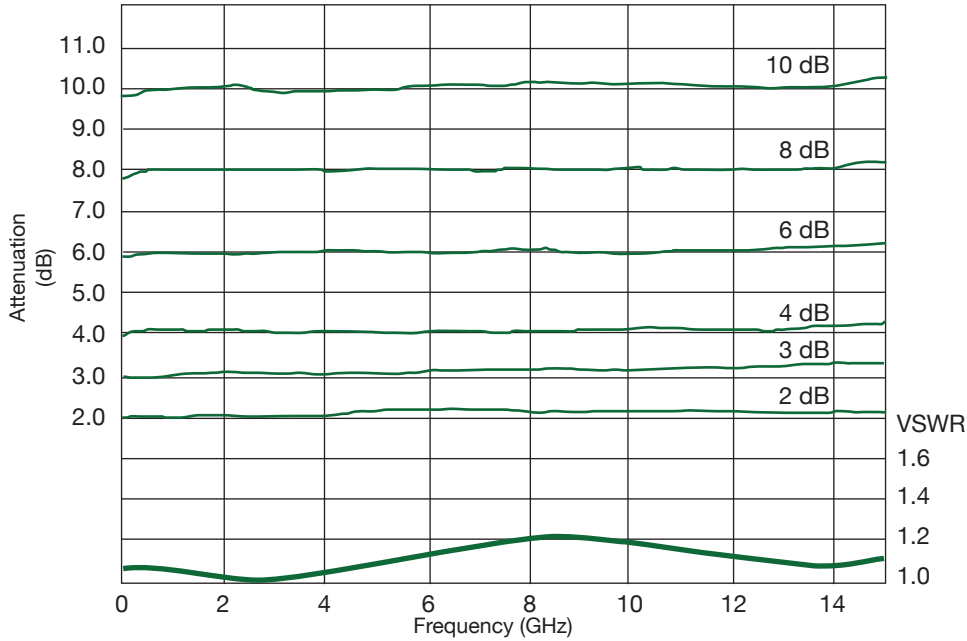
Face Down Example: 3dB, 100mW, SMT 0805 attenuator



ATTENUATION RANGES

The A-Series is available in values from 0dB to 10dB in 1dB increments. Standard impedance is 50Ω.

Frequency Characteristics (A-0805)*



*Performs within spec to 20GHz when mounted face down.

