

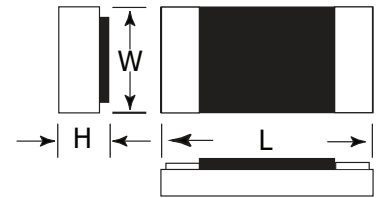
## FEATURES

- Thick film technology
- Single sided terminations for wirebonding, soldering and epoxy attachment
- Gold, platinum silver and platinum silver with solder coated terminations
- Resistance values from 0.1Ω to 1TΩ
- Low TCRs
- Operating temperature: -55°C to 150°C



## DIMENSIONS

| Part                | Length       | Width        | Height (max) | WVDC (max) | Rated Power @ 70°C | Tolerance (%) |
|---------------------|--------------|--------------|--------------|------------|--------------------|---------------|
| IMS000              | 0.045 ± .005 | 0.030 ± .005 | 0.016        | 60         | 125mW              | 1, 2, 5, 10   |
| IMS001              | 0.050 ± .005 | 0.050 ± .005 | 0.016        | 60         | 125mW              | 1, 2, 5, 10   |
| IMS002              | 0.075 ± .005 | 0.050 ± .005 | 0.016        | 100        | 175mW              | 1, 2, 5, 10   |
| IMS003              | 0.100 ± .005 | 0.050 ± .005 | 0.016        | 160        | 250mW              | 1, 2, 5, 10   |
| IMS004              | 0.150 ± .005 | 0.050 ± .005 | 0.016        | 350        | 350mW              | 1, 2, 5, 10   |
| IMS005              | 0.100 ± .005 | 0.100 ± .005 | 0.016        | 160        | 500mW              | 1, 2, 5, 10   |
| IMS008              | 0.100 ± .005 | 0.025 ± .005 | 0.016        | 175        | 100mW              | 1, 2, 5, 10   |
| IMS009              | 0.080 ± .005 | 0.050 ± .005 | 0.016        | 150        | 175mW              | 1, 2, 5, 10   |
| IMSH09              | 0.080 ± .005 | 0.050 ± .005 | 0.016        | 150        | 175mW              | 10, 20, 30    |
| IMS010              | 0.125 ± .005 | 0.050 ± .005 | 0.016        | 230        | 250mW              | 1, 2, 5, 10   |
| IMS013 <sup>1</sup> | 0.045 ± .005 | 0.030 ± .005 | 0.016        | 60         | 125mW              | 1, 2, 5, 10   |
| IMS014 <sup>1</sup> | 0.035 ± .005 | 0.035 ± .005 | 0.016        | 50         | 125mW              | 1, 2, 5, 10   |
| IMS017 <sup>1</sup> | 0.025 ± .005 | 0.030 ± .005 | 0.016        | 40         | 30mW               | 1, 2, 5, 10   |



1. Available with Au (-1) terminal material only

1%, 2% not available over 1MΩ.

## ORDERING INFORMATION

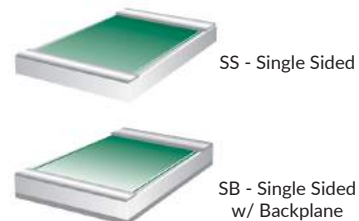
Example: 0.045" X 0.030", gold terminations, 100Ω, 5% tolerance

|  |                  |                  |          |          |             |  |  |
|--|------------------|------------------|----------|----------|-------------|--|--|
|  |                  | <b>IMS000</b>    | <b>1</b> | <b>B</b> | <b>1000</b> | <b>J</b>   |  |
| 000 <sup>2</sup>   | 001              | 002              |          |          |             |  |  |
| 003  | 004              | 005              |          |          |             |  |  |
| 008  | H09              | 009              |          |          |             |  |  |
| 010  | 013 <sup>1</sup> | 014 <sup>1</sup> |          |          |             |  |  |
| 017 <sup>1</sup>   |                  |                  |          |          |             |  |  |
| <b>Termination Material</b>  |                  |                  |          |          |             |  |  |
| <input checked="" type="checkbox"/> -1 Au<br><input checked="" type="checkbox"/> -3 PtAg<br>-C PtAg w/ Sn62 Solder<br><input checked="" type="checkbox"/> -P PtAg w/ Sn96 Solder |                  |                  |          |          |             |  |  |
| <b>Terminal Style</b>  |                  |                  |          |          |             |  |  |
| none = SS    B = SB  |                  |                  |          |          |             |  |  |
|  |                  |                  |          |          |             | <b>Tolerance</b>   |  |
|  |                  |                  |          |          |             | F - 1%    G - 2%    J - 5%   |  |
|  |                  |                  |          |          |             | K - 10%    L - 15%    M - 20%  |  |
|  |                  |                  |          |          |             | N - 30%  |  |
|  |                  |                  |          |          |             | 1%, 2% not available over 1MΩ  |  |
|  |                  |                  |          |          |             | <b>Resistance Value</b>  |  |
|  |                  |                  |          |          |             | The first three digits are significant values.                           |  |
|  |                  |                  |          |          |             | The fourth is the number of zeroes following.                            |  |
|  |                  |                  |          |          |             | The R indicates a decimal point when resistance value is less than 100Ω. |  |
|  |                  |                  |          |          |             | For jumper use code JUMPR  |  |

1. Available with Au (-1) terminal material only  
2. Available in -1 only

Add 'B' after the dash number to indicate a backplane of the same metalization (-1, -3 only).

### Terminations



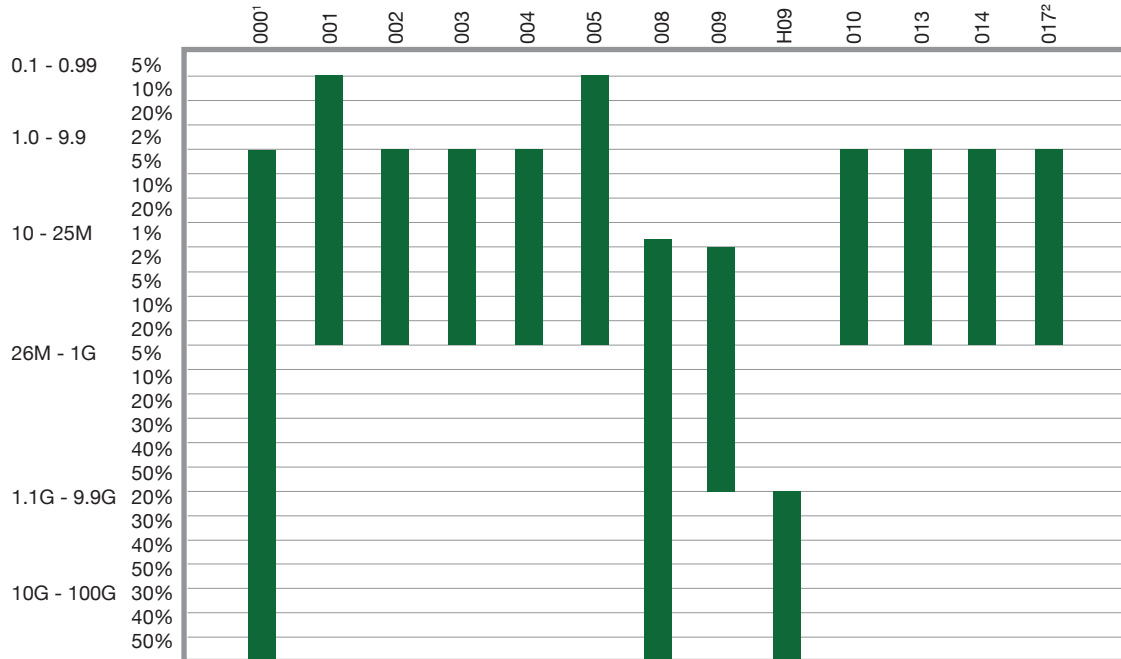
Note: Not all termination materials available in all styles.

Bulk packaging is standard. Tape and reel and waffle packs are available for some sizes. Please consult factory.

Packaging: B=Bulk, T=Tape and Reel, W=Waffle Pack  
RoHS Compliant =

## Resistance Ranges

The table below illustrates the resistance values and the tolerances available for all of IMS' single side devices. Resistance values can be as low as 0.1Ω and as high as 100GΩ (device dependent). For resistances higher than 100GΩ, consult the factory.



Jumpers are available in all sizes.  
 1 Larger bond pads available for auto wirebonding.  
 2 Highest Value for 1% or 2% Tolerance is 1MΩ