

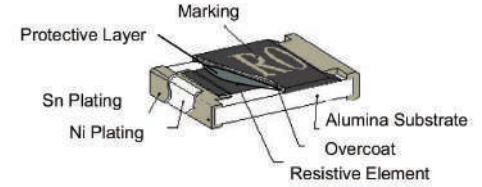
Thin Film Current Sensing Surface Mount Chip Resistors

RoHS LOW TCR

FEATURES

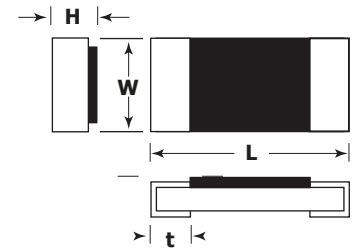
ITEM	SPECIFICATION
Operating Temperature:	-55°C to +150°C
Maximum Working Voltage:	$\sqrt{P \cdot R}$
Resistance Tolerances:	±1%, ±2% or ±5%
Attachment:	Solder

- High stability thin film resistor element
- 99% Al₂O₃ substrate material
- 100% matte tin terminals
- Nickel barrier layer
- Tolerances to ±1%
- Passivation of resistor element

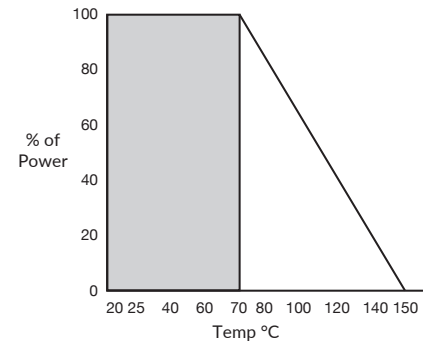
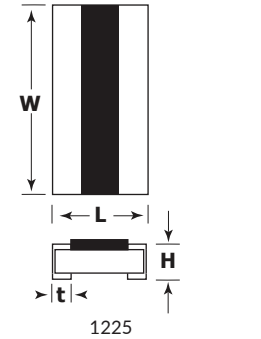


All dimensions are in inches

Part	Length	Width	Height (max)	t	Rated Power @ 70°C	mΩ	TCR
LCI-0402	0.039±.002	0.020±.002	0.017	0.008±.004	63mW	50-100	±400
						102-500	±300
						510-1000	±200
LCI-0603	0.063±.004	0.031±.004	0.022	0.012±.008	100mW	20-50	±600
						50-100	±400
						102-500	±300
						510-1000	±200
LCI-0805	0.079±.006	0.049±.006	0.026	0.016±.010	125mW	20-50	±600
						51-100	±400
						102-500	±300
						510-1000	±200
LCI-1206	0.120±.006	0.061±.006	0.026	0.016±.010	250mW	10-20	±600
						21-50	±400
						51-91	±300
						100-1000	±200
LCI-2010	0.197±.008	0.096±.006	0.030	0.020±.010	750mW	10-20	±600
						21-50	±400
						51-91	±300
						100-1000	±200
LCI-2512	0.250±.008	0.124±.006	0.028	0.022±.010	1W	10-20	±600
						21-50	±400
						51-91	±300
						100-1000	±200
LCI-1225	0.122±.006	0.248±.006	0.041	0.022±.010	3W	3-5	±300
						6-20	±200
						21-30	±150
						33-1000	±100

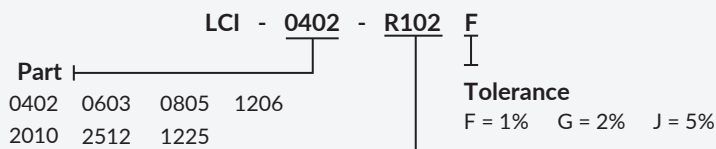


0402, 0603, 0805, 1206, 2010, 2512



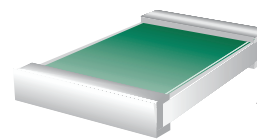
ORDERING INFORMATION

Example: 0402, 63mW, 0.101Ω, 1% resistor with Nickel Barrier terminals



Highest resistor value is 1Ω (1R00). For values below 1Ω use 'R' to indicate a decimal point before resistance value.
For example: 0.102Ω is noted as R102, 0.05Ω is noted as R050.

Terminal Style



WA - Full Wraparound terminals with nickel barrier layer

Packaging: T=Cut Tape or Tape and Reel

RoHS Compliant =

RoHS LOW TCR