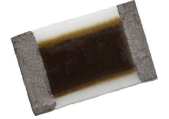


0402 0603 0805 1206 1210 2010 2512
Thin Film Wraparound Surface Mount Chip Resistors

RoHS LOW TCR KIT



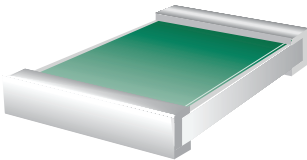
FEATURES

- Precision nichrome thin film resistor element
- 99.5% Al₂O₃
- Nickel barrier layer provides excellent solder leach resistance
- Tolerances to ±0.01%
- Ultra low noise resistor film
- Passivated resistor element

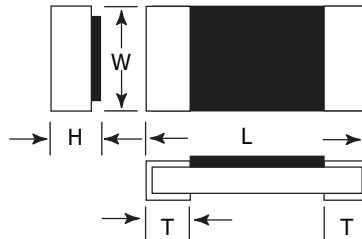
DIMENSIONS & POWER RATING

Part	Length	Width	Height	Terminal	VWDC (max)	Rated Power @ 70°C
TPI-0402	0.039±.002	0.020±.002	0.016 max.	0.008±.004	25 VDC	63mW
TPI-0603	0.063±.008	0.031±.008	0.022 max.	0.012±.008	50 VDC	63mW
TPI-0805	0.079±.008	0.049±.008	0.026 max.	0.014±.010	100 VDC	100mW
TPI-1206	0.124±.010	0.063±.008	0.026 max.	0.020±.012	150 VDC	125mW
TPI-1210	0.124±.006	0.100±.006	0.026 max.	0.020±.010	150 VDC	250mW
TPI-2010	0.200±.006	0.100±.006	0.026 max.	0.020±.010	150 VDC	250mW
TPI-2512	0.250±.006	0.122±.006	0.026 max.	0.020±.010	150 VDC	500mW

Termination Style



WA- Full wraparound termination nickel barrier layer terminals with a 100% matte tin finish.



ORDERING INFORMATION

Example: 97.6Ω, 0.5%, 1206 resistor

TPI - 1206 - 97R6 D

Thin Film
Wraparound Nickel Barrier
100% Matte Tin

Part

0402	1210
0603	2010
0805	2512
1206	

Resistance Value
The first three digits are significant values. The fourth is the number of zeroes following. The R indicates a decimal point when resistance value is less than 100Ω.

Tolerance

T = 0.01%	D = 0.5%
A = 0.05%	F = 1%
B = 0.1%	

Available as special order only.
Add "V" after size for 5PPM.
Add "N" after size for 10PPM.

For packaging options please visit our website
www.ims-resistors.com/packaging
RoHS Compliant = ✓

RoHS LOW TCR KIT

0402 0603 0805 1206 1210 2010 2512

RoHS LOW TCR KIT

Thin Film Wraparound Surface Mount Chip Resistors

RESISTANCE RANGES

Part	0.01% ¹	0.05% ¹	0.1%	0.5%	1%
TPI-0402	49.9Ω to 12KΩ	49.9Ω to 12KΩ	1Ω to 205KΩ	1Ω to 205KΩ	N/A
TPI-0603	24.9Ω to 100KΩ	4.7Ω to 100KΩ	4.7Ω to 1MΩ	2Ω to 1MΩ	N/A
TPI-0805	24.9Ω to 200KΩ	4.7Ω to 500KΩ	4.7Ω to 2MΩ	1Ω to 2MΩ	0.2Ω to 8.2Ω ²
TPI-1206	24.9Ω to 500KΩ	24.9Ω to 500KΩ	1Ω to 2.5MΩ	1Ω to 2.5MΩ	N/A
TPI-1210	24.9Ω to 500KΩ	24.9Ω to 500KΩ	4.7Ω to 2.5MΩ	1Ω to 2.5MΩ	N/A
TPI-2010	24.9Ω to 500KΩ	24.9Ω to 500KΩ	4.7Ω to 3MΩ	1Ω to 3MΩ	N/A
TPI-2512	24.9Ω to 500KΩ	24.9Ω to 500KΩ	4.7Ω to 3MΩ	1Ω to 3MΩ	N/A

1. Available as a special order only. Consult factory for additional values, sizes and tolerances available.

2. 0805 (low ohms) max working voltage $\sqrt{P \cdot R}$, rated power 250mW

TCR

Part	25 ppm/°C	10 ppm/°C ³	5 ppm/°C ³
TPI-0402	10Ω to 205KΩ	49.9Ω to 12KΩ	49.9Ω to 3KΩ
TPI-0603	2Ω to 1MΩ	4.7Ω to 332KΩ	24.9Ω to 15KΩ
TPI-0805	1Ω to 2MΩ	4.7Ω to 500KΩ	24.9Ω to 30KΩ
TPI-1206	1Ω to 2.5KΩ	4.7Ω to 1MΩ	24.9Ω to 50KΩ
TPI-1210	1Ω to 2.5KΩ	4.7Ω to 1MΩ	24.9Ω to 100KΩ
TPI-2010	1Ω to 3MΩ	4.7Ω to 1MΩ	24.9Ω to 100KΩ
TPI-2512	1Ω to 3MΩ	4.7Ω to 1MΩ	24.9Ω to 100KΩ

3. Available as special order. Add 'N' after size for 10 ppm. Add 'V' after size for 5 ppm.