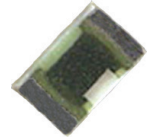


# Super RCX-Series

0402S 0603S 0805S 1206S 2010S 2512S

ULR RoHS Sn62 NON-MAG

Thick Film Wraparound Extended Power Surface Mount Chip Resistors for Epoxy and Solder Mount



## FEATURES

- The power handling of other resistors in the same size package
- High stability thick film resistor element
- 96% Al<sub>2</sub>O<sub>3</sub> substrate material
- Tolerances to ±1%
- Operating Temp. -55 to 150°C

## DIMENSIONS

| Part      | Length       | Width        | Height (max) | Terminal     | WVDC (max) | Rated Power @ 70°C | Tolerance (%) |
|-----------|--------------|--------------|--------------|--------------|------------|--------------------|---------------|
| RCX-0402S | 0.040 ± .005 | 0.020 ± .005 | 0.020        | 0.008 ± .004 | 50VDC      | 160mW              | 2, 5, 10      |
| RCX-0603S | 0.060 ± .005 | 0.030 ± .005 | 0.020        | 0.014 ± .006 | 50VDC      | 200mW              | 1, 2, 5, 10   |
| RCX-0805S | 0.080 ± .005 | 0.050 ± .005 | 0.020        | 0.018 ± .008 | 150VDC     | 350mW              | 1, 2, 5, 10   |
| RCX-1206S | 0.126 ± .008 | 0.063 ± .006 | 0.020        | 0.020 ± .010 | 200VDC     | 500mW              | 1, 2, 5, 10   |
| RCX-2010S | 0.197 ± .008 | 0.106 ± .008 | 0.028        | 0.020 ± .012 | 200VDC     | 1W                 | 1, 2, 5, 10   |
| RCX-2512S | 0.248 ± .008 | 0.126 ± .010 | 0.028        | 0.026 ± .010 | 200VDC     | 2W                 | 1, 2, 5, 10   |

Power handling can be extended further using proper thermal management. Consult factory for additional values, sizes and tolerances.

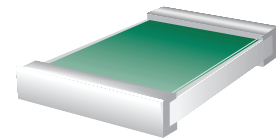
## TERMINATIONS

### Terminal Metallizations

| Base Metal                 | No Solder Applied (PN Prefix)             | Sn62 Solder Coat (PN Prefix) | Sn96 Solder Coat (PN Prefix)              |
|----------------------------|---|------------------------------|---|
| Platinum Silver (PtAg)     | RC3 - <input checked="" type="checkbox"/> | RCC                          | RCP - <input checked="" type="checkbox"/> |
| ULR Platinum Silver (PtAg) | RC8 - <input checked="" type="checkbox"/> | RCH                          | RCR - <input checked="" type="checkbox"/> |

### Terminal Styles

WA - Full Wraparound



## ORDERING INFORMATION

Example: 100Ω, 5%, 0402, PtAg terminals, 160mW resistor

RC3 - 0402S - 1000 J

**Termination Material**

- 3 PtAg
- 8 ULR PtAg
- C PtAg w/ Sn62 Solder
- P PtAg w/ Sn96 Solder
- H ULR PtAg w/ Sn62 Solder
- R ULR PtAg w/ Sn96 Solder

**Tolerances**

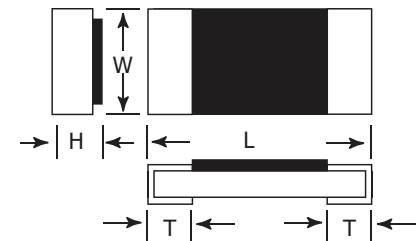
F - 1% J - 5%  
G - 2% K - 10%

**Resistance Value**

The first three digits are significant values. The fourth is the number of zeroes following. The R indicates a decimal point when resistance value is less than 100Ω.

**Part**

|       |       |       |
|-------|-------|-------|
| 0402S | 0603S | 0805S |
| 1206S | 2010S | 2512S |



For packaging options please visit our website [www.ims-resistors.com/packaging](http://www.ims-resistors.com/packaging)

RoHS Compliant =

ULR = Ultra Leach Resistant

ULR RoHS Sn62 NON-MAG