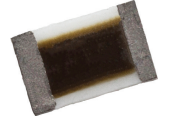


0402 0603 0805 1206 1210 2010 2512
Thin Film Wraparound Surface Mount Chip Resistors

RoHS LOW TCR KIT



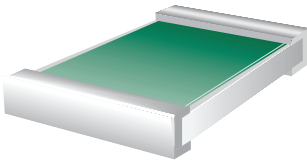
FEATURES

- Precision nichrome thin film resistor element
- 99.5% Al₂O₃
- Nickel barrier layer provides excellent solder leach resistance
- Tolerances to ±0.01%
- Ultra low noise resistor film
- Passivated resistor element

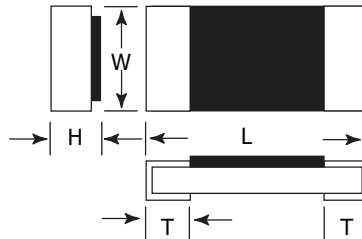
DIMENSIONS & POWER RATING

Part	Length	Width	Height	Terminal	VWDC (max)	Rated Power @ 70°C
TPI-0402	0.039±.002	0.020±.002	0.016 max.	0.008±.004	25 VDC	63mW
TPI-0603	0.063±.008	0.031±.008	0.022 max.	0.012±.008	50 VDC	63mW
TPI-0805	0.079±.008	0.049±.008	0.026 max.	0.014±.010	100 VDC	100mW
TPI-1206	0.124±.010	0.063±.008	0.026 max.	0.020±.012	150 VDC	125mW
TPI-1210	0.124±.006	0.100±.006	0.026 max.	0.020±.010	150 VDC	250mW
TPI-2010	0.200±.006	0.100±.006	0.026 max.	0.020±.010	150 VDC	250mW
TPI-2512	0.250±.006	0.122±.006	0.026 max.	0.020±.010	150 VDC	500mW

Termination Style



WA- Full wraparound termination nickel barrier layer terminals with a 100% matte tin finish.



ORDERING INFORMATION

Example: 97.6Ω, 0.5%, 1206 resistor

Thin Film Wraparound Nickel Barrier 100% Matte Tin

Part

0402	1210
0603	2010
0805	2512
1206	

TPI - 1206 - 97R6 D

Tolerance

T = 0.01%	D = 0.5%
A = 0.05%	F = 1%
B = 0.1%	

Resistance Value

The first three digits are significant values. The fourth is the number of zeroes following. The R indicates a decimal point when resistance value is less than 100Ω.

Available as special order only.
Add "V" after size for 5PPM.
Add "N" after size for 10PPM.

For packaging options please visit our website
www.ims-resistors.com/packaging
RoHS Compliant = ✓

RoHS LOW TCR KIT

0402 0603 0805 1206 1210 2010 2512

RoHS LOW TCR KIT

Thin Film Wraparound Surface Mount Chip Resistors

RESISTANCE RANGES

Part	0.01% ¹	0.05% ¹	0.1%	0.5%	1%
TPI-0402	49.9Ω to 12KΩ	49.9Ω to 12KΩ	1Ω to 205KΩ	1Ω to 205KΩ	N/A
TPI-0603	24.9Ω to 100KΩ	4.7Ω to 100KΩ	4.7Ω to 1MΩ	2Ω to 1MΩ	N/A
TPI-0805	24.9Ω to 200KΩ	4.7Ω to 500KΩ	4.7Ω to 2MΩ	1Ω to 2MΩ	0.2Ω to 8.2Ω ²
TPI-1206	24.9Ω to 500KΩ	24.9Ω to 500KΩ	1Ω to 2.5MΩ	1Ω to 2.5MΩ	N/A
TPI-1210	24.9Ω to 500KΩ	24.9Ω to 500KΩ	4.7Ω to 2.5MΩ	1Ω to 2.5MΩ	N/A
TPI-2010	24.9Ω to 500KΩ	24.9Ω to 500KΩ	4.7Ω to 3MΩ	1Ω to 3MΩ	N/A
TPI-2512	24.9Ω to 500KΩ	24.9Ω to 500KΩ	4.7Ω to 3MΩ	1Ω to 3MΩ	N/A

1. Available as a special order only. Consult factory for additional values, sizes and tolerances available.

2. 0805 (low ohms) max working voltage $\sqrt{P \cdot R}$, rated power 250mW

TCR

Part	25 ppm/°C	10 ppm/°C ³	5 ppm/°C ³
TPI-0402	10Ω to 205KΩ	49.9Ω to 12KΩ	49.9Ω to 3KΩ
TPI-0603	2Ω to 1MΩ	4.7Ω to 332KΩ	24.9Ω to 15KΩ
TPI-0805	1Ω to 2MΩ	4.7Ω to 500KΩ	24.9Ω to 30KΩ
TPI-1206	1Ω to 2.5KΩ	4.7Ω to 1MΩ	24.9Ω to 50KΩ
TPI-1210	1Ω to 2.5KΩ	4.7Ω to 1MΩ	24.9Ω to 100KΩ
TPI-2010	1Ω to 3MΩ	4.7Ω to 1MΩ	24.9Ω to 100KΩ
TPI-2512	1Ω to 3MΩ	4.7Ω to 1MΩ	24.9Ω to 100KΩ

3. Available as special order. Add 'N' after size for 10 ppm. Add 'V' after size for 5 ppm.